

Italian Stringing on Drapery Panels

Rose Mary LeBlanc



Presented By
Seamless Workroom LLC and
RML Custom Home Creations LLC



My designer designed light and airy stationary panels that would be held back on tie back medallions. The homeowner needed access to a roller shade behind the panel.

Knowing that gravity would win out and the panel would not keep its graceful shape, I suggested Italian Stringing to hold it in place.

Italian Stringing is an age old method of both opening and closing panels and also holding them in place.

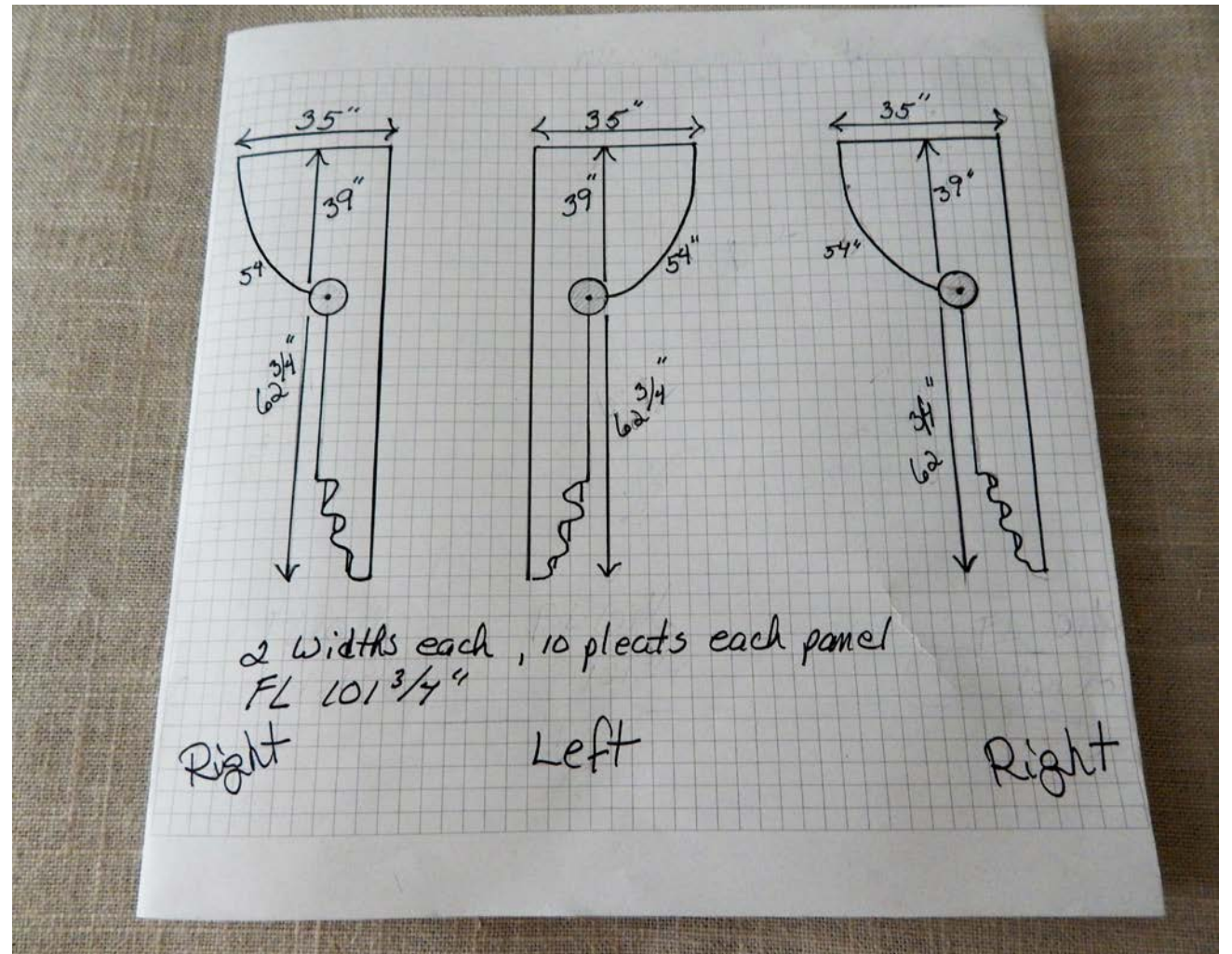
The stringing pulls up from the leading edge to the return.

I also had another design feature to work out – the leading edge ring would have to stay in place and not let gravity pull it back to the return. The solution was easy – a metal rod with 2 earth magnets in back to keep the first ring from moving.



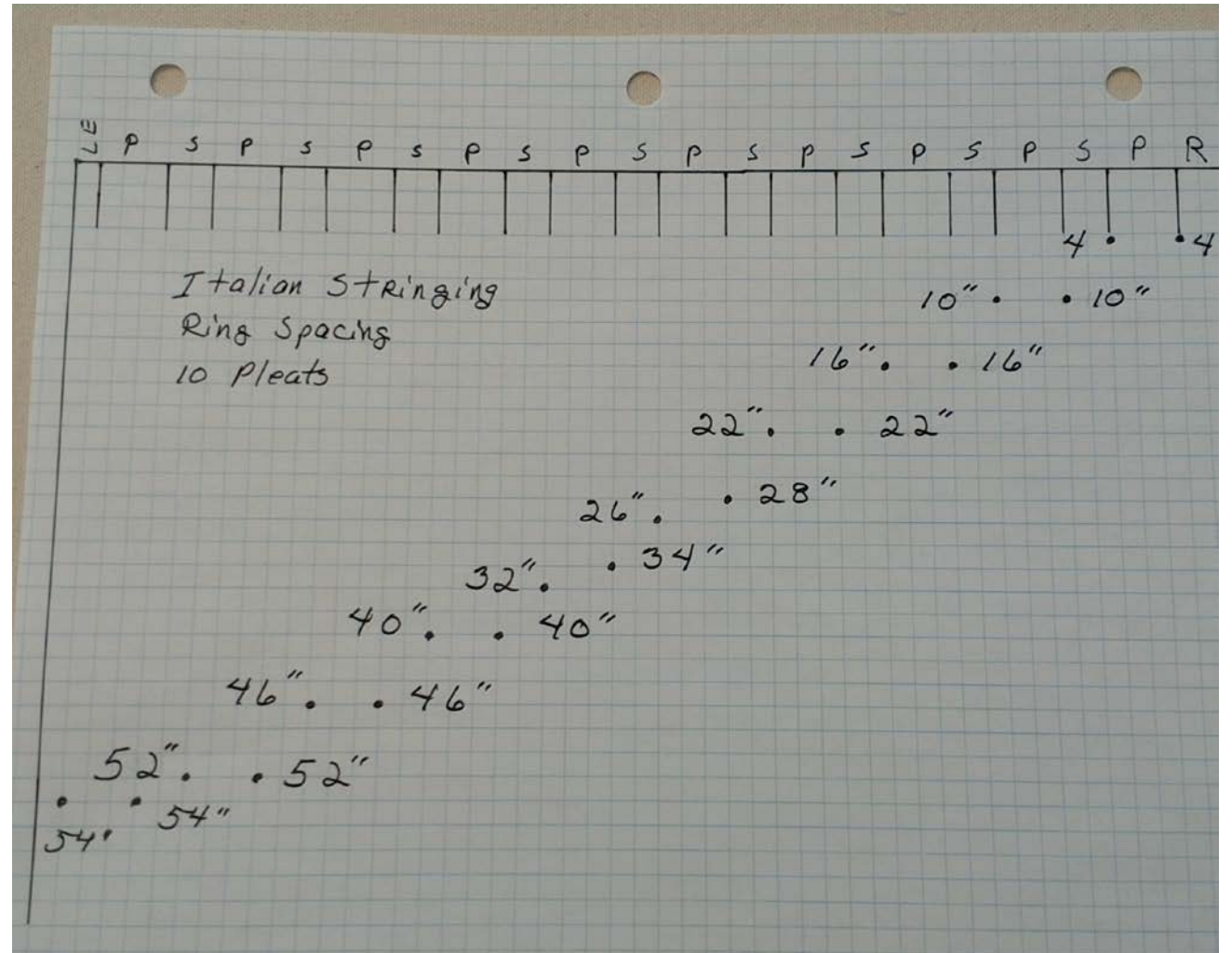
Step 1: The Diagram

- To measure the 3 windows I used the **Seamless Workroom Single Measuring Diagram**.
- To calculate the yardage and pricing I used **Seamless Workroom Stationary Panel Workbook**.
- Before doing anything I advised that we do a top down measure – install the hardware first, then measure for finished length.
- After installation, I carefully measured all finished lengths.
- I dropped bead weight chain from the first ring to the tie back medallion and draped a curve until the designer was pleased with the curve.
- I placed a safety pin on the chain at the medallion and measured that length.



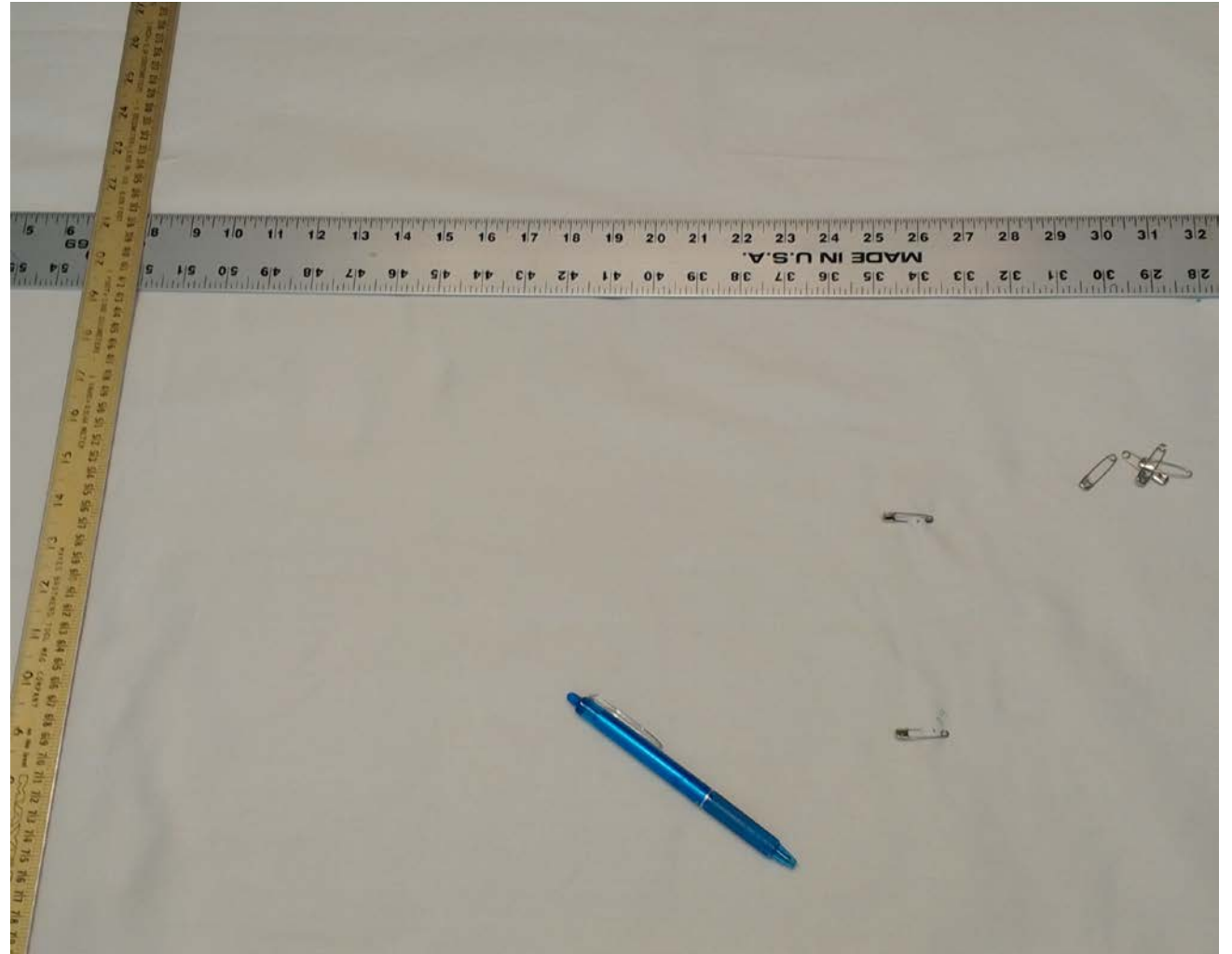
Step 2: Italian Stringing Chart

- The panels would be 2 widths each and 10 pleats.
- Next I drew a diagram of where the rings would be sewn
- One ring will be sewn on either side of each pleat
- The rings will be spaced as far apart as the width of the pleats so that the stringing pulls up the pleats evenly.
- After a little experimenting with vertical spacing, I determined the correct ring placement.



Step 3: Marking Ring Placement

- Fabricate and table panels as usual
- While panel is flat on the table and *before* pleating, mark the ring placement as charted on the diagram
- Run 2 rulers both vertically and horizontally checking for square
- Place a safety pin at each mark through all thicknesses



Step 4:

Testing The Stringing

- After the pins are in place, run string through all pins. I used shade cord.
- At the ring on the leading edge I did a slip knot and ran double cord through – a little bit of over doing it
- Pull up from leading edge to return
- If it all looks right you are ready to sew on the rings



Step 5: Sew on Rings

- I used Wawak Cotton Thread #16 (I call it buttonhole thread). It holds a knot very tight.
- Stitch through all thicknesses



Step 5: Orbs

- To secure the cord at the leading edge I used an orb
- It is easy to adjust the drape with an orb
- After all of the rings are sewn on, pleat as usual
- And you are ready for install





Thank you for viewing this presentation.

© Rose Mary LeBlanc 2017

RML Custom Home Creations LLC

www.rmlcustomhome.com

Seamless Workroom LLC

www.seamlessworkroom.com



SEAMLESS

WORKROOM

YOUR PATTERN TO SUCCESS



Custom Home Creations, LLC.